



Bague Roxtec CRL

Solutions d'étanchéité circulaires pour shelters et coffrets de télécommunications.

Le CRL Roxtec est une solution d'étanchéité circulaire pour les passages de 4" et 5". L'espace de remplissage carré du cadre accueille des modules d'étanchéité ainsi que des câbles, des tuyauteries et des fibres optiques. La compression est intégrée à la bague.



- Léger
- Surface optimisée
- S'adapte à différents diamètres de câbles et de tuyaux

Caractéristiques du produit



IP/UL NEMA

Structure d'installation



Armoires et coffrets

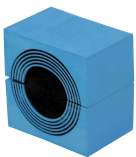
Classements et certificats

Étanchéité

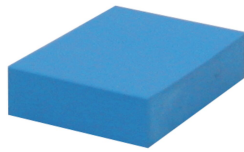
- IP 54

Éléments d'étanchéité

Éléments d'étanchéité



Module CM avec Multidiameter™



Module de compensation plein CM



Gel d'assemblage Roxtec

Pour plus d'informations, veuillez consulter [roxtec.com](https://www.roxtec.com).



Kits de passage préconfigurés

mm/kg



Titre	Configuration	Dimensions d'ouverture Ø	Poids	N° art.
CRL 4"/4	4x (10.0-29.0)	98 - 99	0.6	102993
CRL 4"/5	2x (10.0-29.0), 3x (4.0-16.5)	98 - 99	0.6	102994
CRL 4"/9	9x (4.0-16.5)	98 - 99	0.6	102995
CRL 4"/1	1x (24.0-54.0)	98 - 99	0.5	102997
CRL 5"/1	1x (24.0-54.0)	124 - 125	1	CRL0005010012
CRL 5"/4	4x (10.0-29.0)	124 - 125	1	CRL0005040012
CRL 5"/5	2x (10.0-29.0), 3x (4.0-16.5)	124 - 125	1	CRL0005050012
CRL 5"/9	9x (4.0-16.5)	124 - 125	1	CRL0005090012

The product information provided by Roxtec does not release the purchaser of the Roxtec system, or part thereof, from the obligation to independently determine the suitability of the products for the intended process, installation and/or use.

Roxtec gives no guarantee for the Roxtec system or any part thereof and assumes no liability for any loss or damage whatsoever, whether direct, indirect, consequential, loss of profit or otherwise, occurred or caused by the Roxtec systems or installations containing components not manufactured by an authorized manufacturer and/or occurred or caused by the use of the Roxtec system in a manner or for an application other than for which the Roxtec system was designed or intended.

Roxtec expressly excludes any implied warranties of merchantability and fitness for a particular purpose and all other express or implied representations and warranties provided by statute or common law. User determines suitability of the Roxtec system for intended use and assumes all risk and liability in connection therewith. In no event shall Roxtec be liable for indirect, consequential, punitive, special, exemplary or incidental damages or losses.

The Roxtec products are offered and sold in accordance with the conditions of the Roxtec General Terms of Sales. The latest version of the Roxtec General Terms of Sales can be downloaded from <https://www.roxtec.com/en/about-us/about-roxtec/general-terms-of-sales/>

We reserve the right to make changes to the product and technical information without further notice. Any errors in print or entry are no claims for indemnity. The content of this publication is the property of Roxtec International AB and is protected by copyright.

This document was generated on: 2024-04-03